

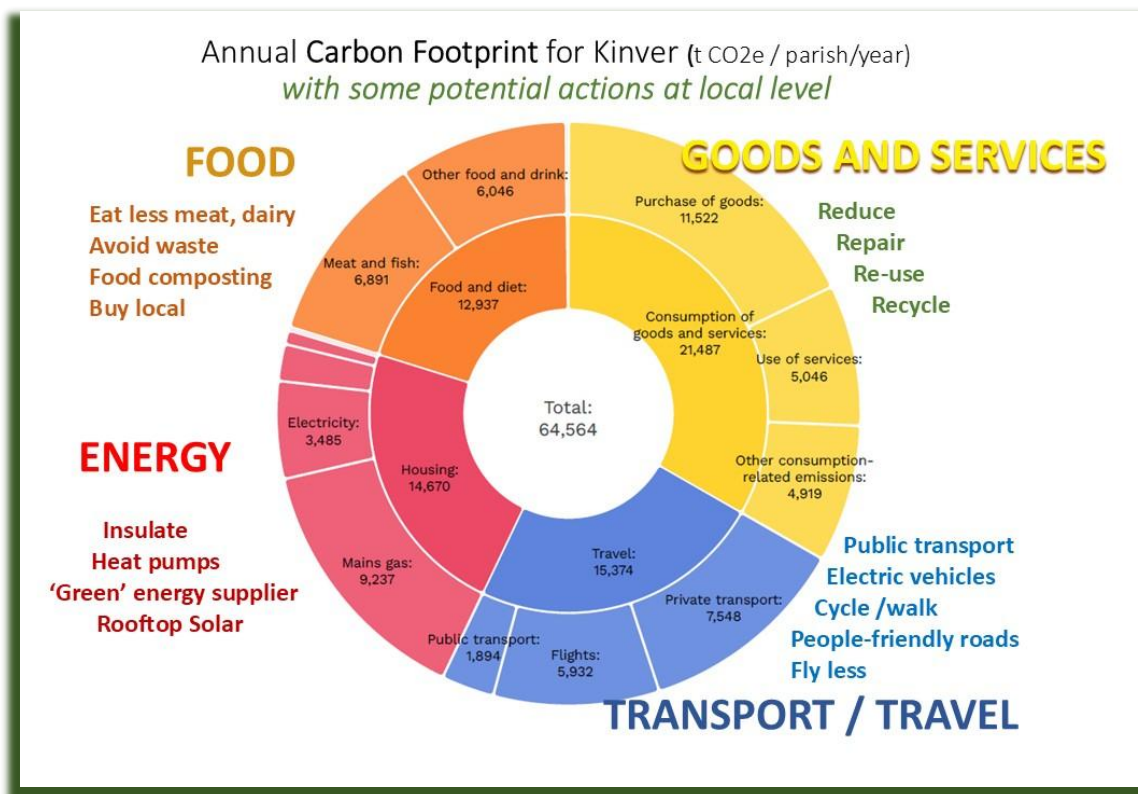
Kinver's Carbon Footprint

Kinver's carbon footprint in 2025 was estimated as 15 tonnes CO₂e per household, per year. This is higher than the UK average, and a lot higher than the global mean. (If you're new to this – here's a [brief explanation](#) of what carbon footprints are and why we have to care about them.)

The big sectors that make up our carbon footprint are:

- **Food and drink:**
- **Energy** – heating, lighting and appliances in the home
- **Travel and transport**
- **Goods and Services** (including all the energy used to make and transport them)

The diagram below carves up our total carbon footprint by sector. And next to each sector, we've put some suggestions for how we could reduce it, locally....



You can see the full report [here](#).

If you'd like to check your own carbon footprint, try the [Giki app](#), it will also suggest simple and effective ideas to help cut down.